

Following up to my last queries, I found that there were falls in the numbers of travel books checked out during 2010 and 2012. Therefore I wondered if we can also observe similar phenomena among other book categories.

Query

My query runs as follows:

```
SELECT
SUM(CASE WHEN YEAR(cout) = 2006 THEN 1 ELSE 0 END) `2006`,
SUM(CASE WHEN YEAR(cout) = 2007 THEN 1 ELSE 0 END) `2007`,
SUM(CASE WHEN YEAR(cout) = 2008 THEN 1 ELSE 0 END) `2008`,
SUM(CASE WHEN YEAR(cout) = 2009 THEN 1 ELSE 0 END) `2009`,
SUM(CASE WHEN YEAR(cout) = 2010 THEN 1 ELSE 0 END) `2010`,
SUM(CASE WHEN YEAR(cout) = 2011 THEN 1 ELSE 0 END) `2011`,
SUM(CASE WHEN YEAR(cout) = 2012 THEN 1 ELSE 0 END) `2012`,
SUM(CASE WHEN YEAR(cout) = 2013 THEN 1 ELSE 0 END) `2013`,
SUM(CASE WHEN YEAR(cout) = 2014 THEN 1 ELSE 0 END) `2014`
FROM
spl2.inraw
WHERE
deweyClass >= 000 AND deweyClass < 100
AND DATE(cout) >= '20060101'
AND DATE(cout) <= '20141231'
```

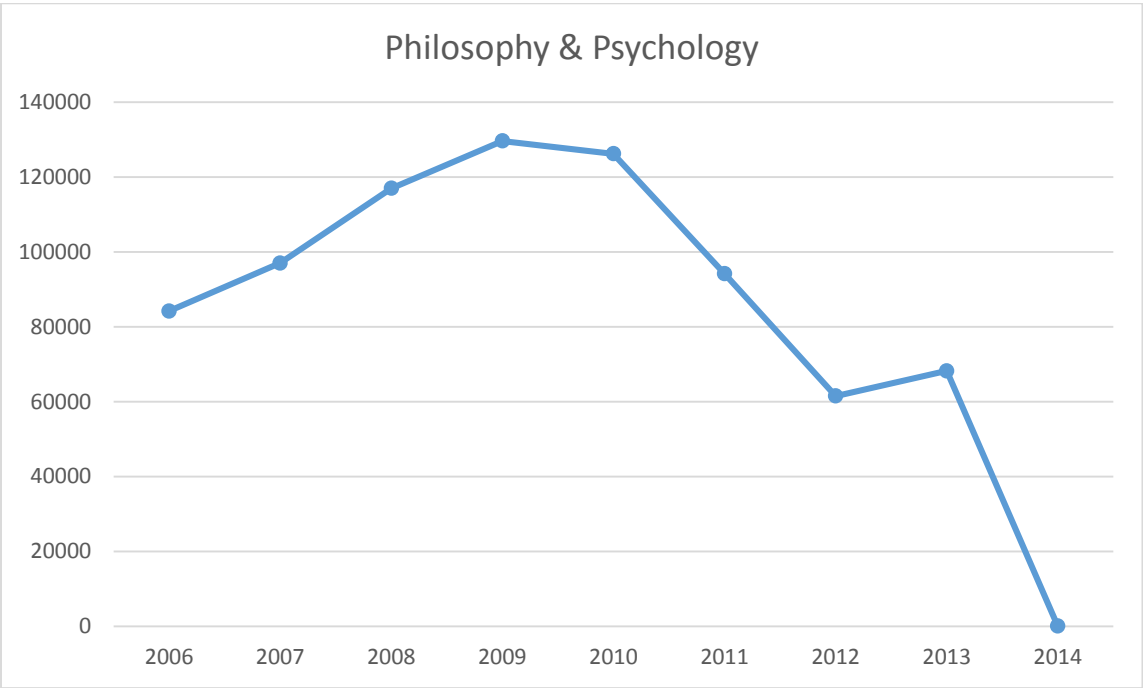
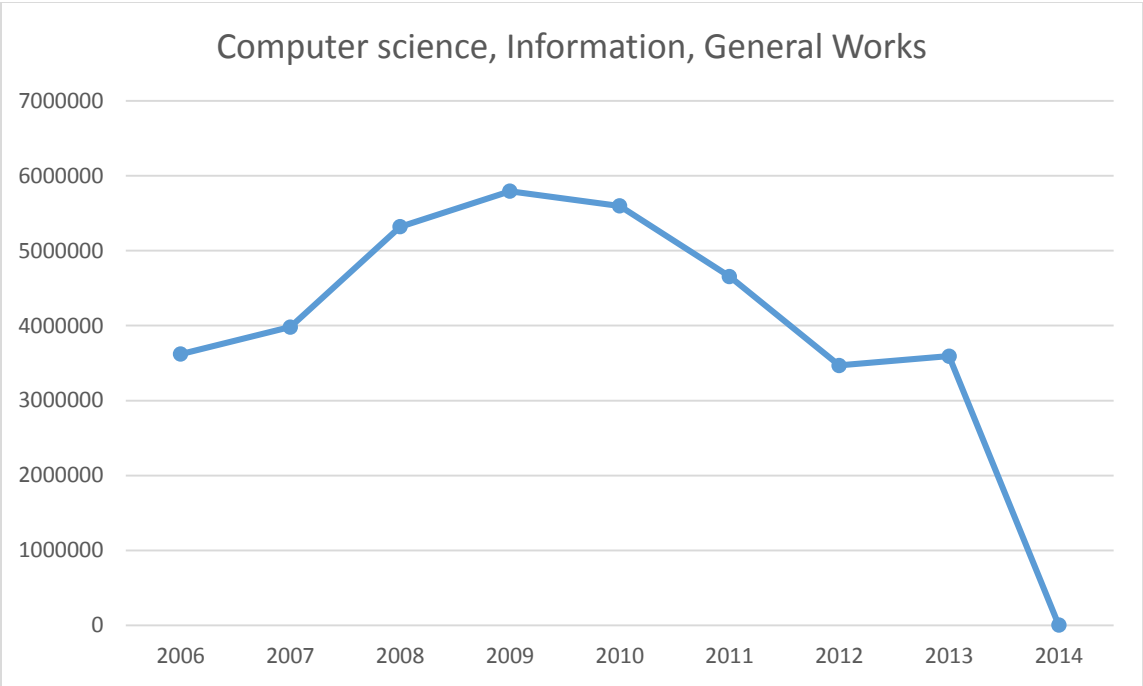
I modified deweyClass for each Dewey Classification. For example, the above query will return the number of books checked out in the category of *Computer Science, Information and General Works*.

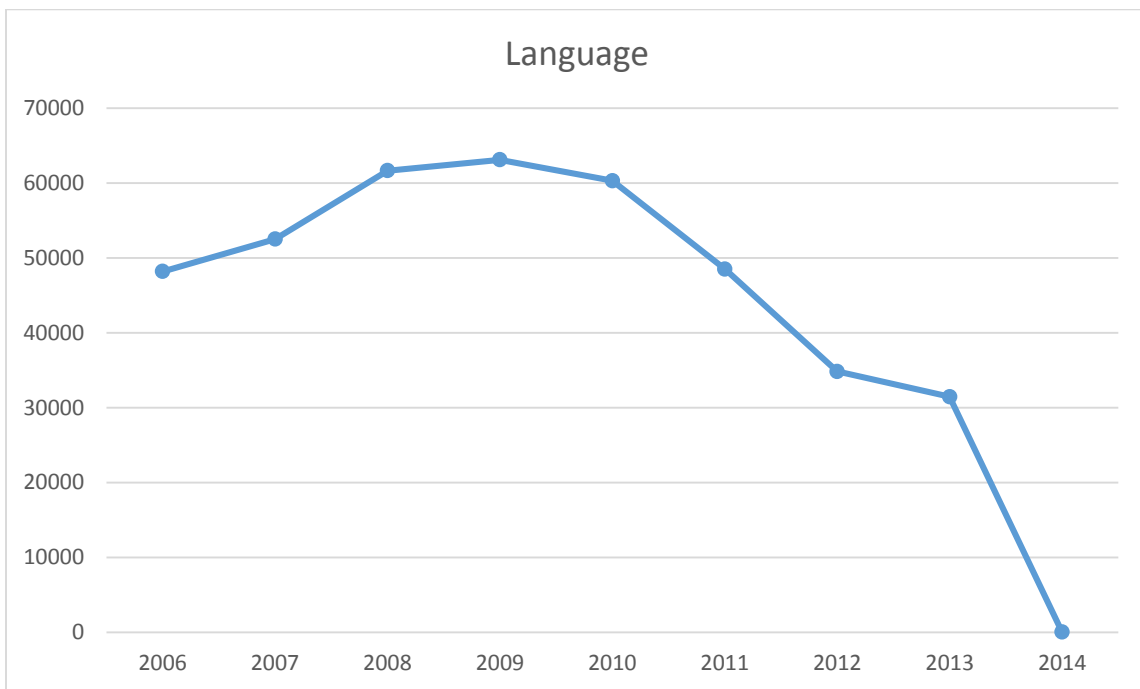
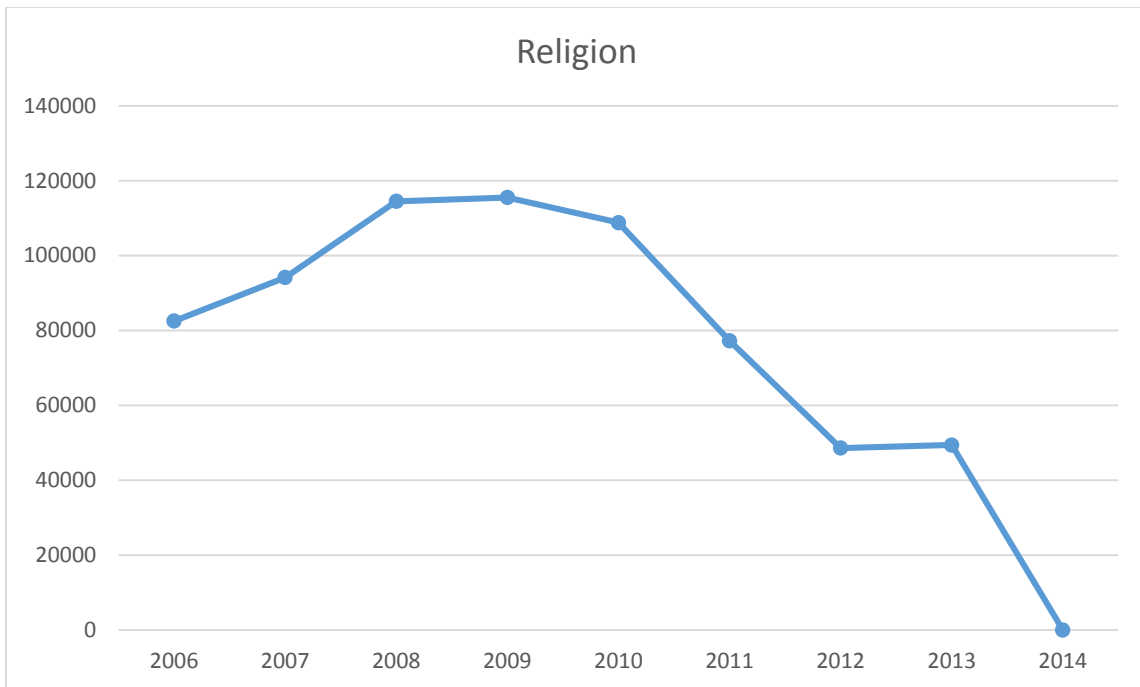
Table 1. Number of books checked out in the category of Computer Science, Information and General Works

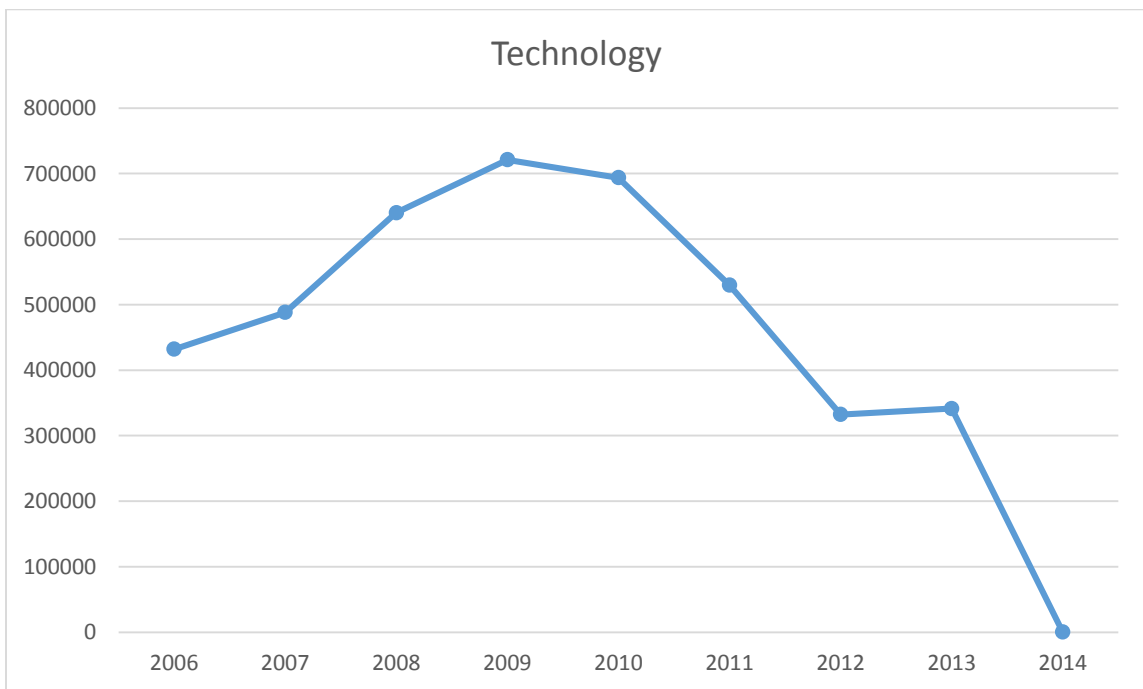
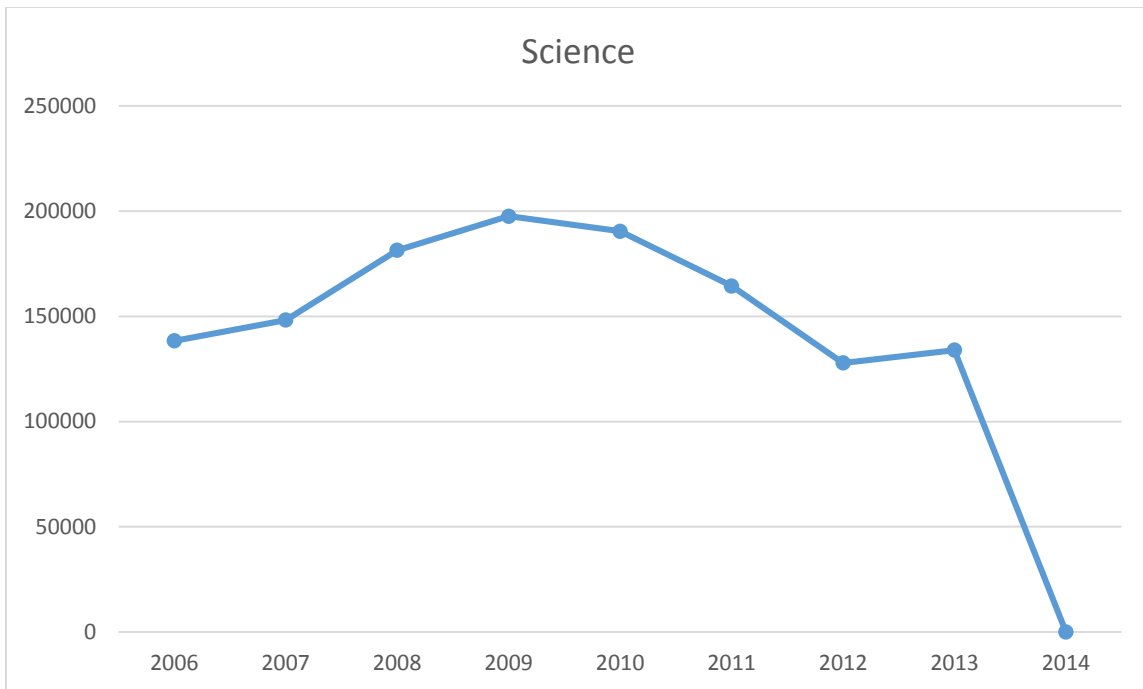
2006	2007	2008	2009	2010	2011	2012	2013	2014
3621689	3981564	5319869	5795456	5598339	4656476	3470127	3592465	2300

Results

These charts show that the numbers of books checked out dropped sharply in all categories between 2010 and 2012. During this two-year period, the drop rate of books checked out in the category of *Science* remains the least while the rate appears the most in the category of *Religion*.







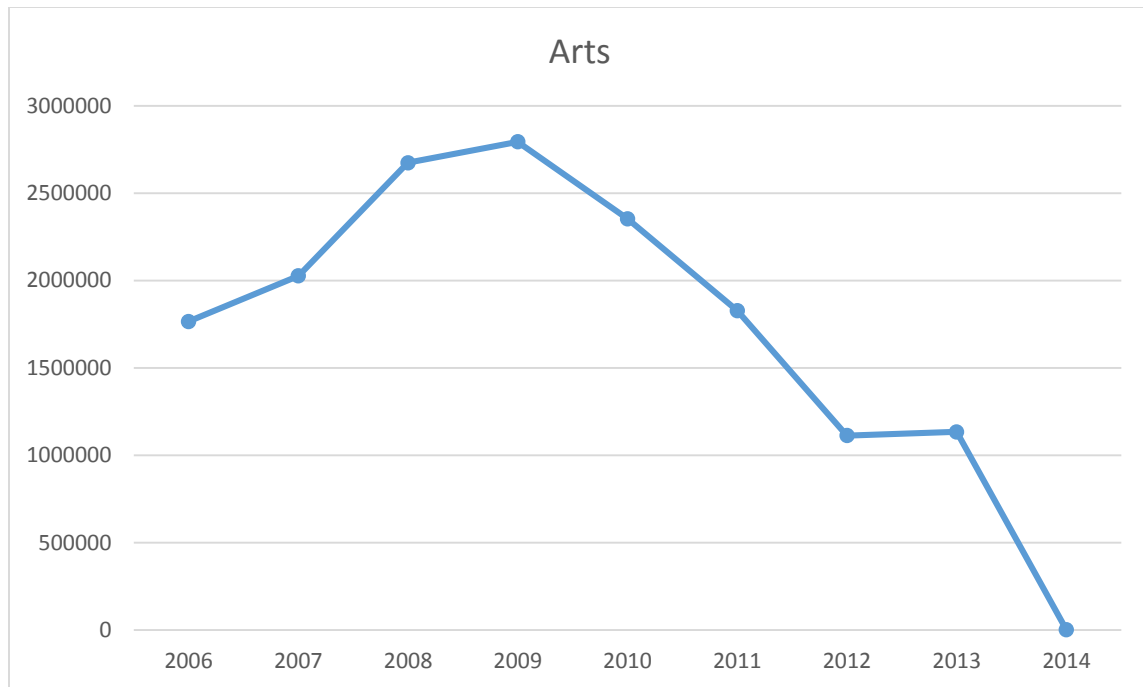
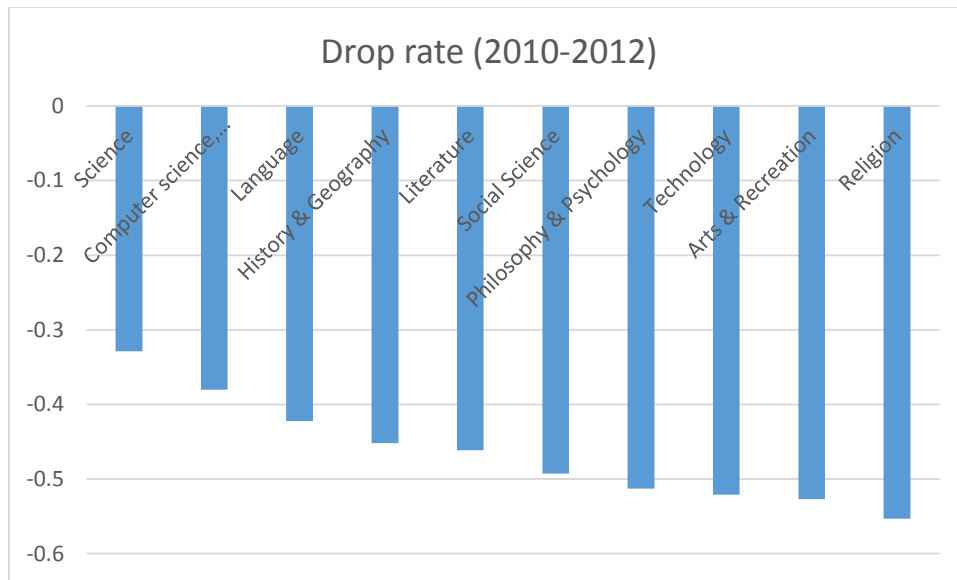


Table 2. Drop rate of books checked out

Category	drop rate (2010-2012)
Science	-0.32865
Computer science, Information, General Works	-0.38015
Language	-0.42248
History & Geography	-0.45211
Literature	-0.46147
Social Science	-0.49249
Philosophy & Psychology	-0.51283
Technology	-0.52117
Arts & Recreation	-0.52695
Religion	-0.55321



Commentary

The reason that the amount of books checked out decreased significantly from 2010 to 2012 could be the serious financial crisis which happened in late 2008. There could be funding cuts in Seattle so that the public library cannot afford to buy new books.