

Data Mining Assignment

Question:

Which dewey classes appear the most in different hours of the day?

Query:

```
SELECT
    select hour(cout) as hour,

    SUM(CASE WHEN 0 < deweyClass and deweyClass < 100 THEN 1 ELSE 0
    END) as "000-099",
    SUM(CASE WHEN 100 < deweyClass and deweyClass < 200 THEN 1 ELSE
    0 END) as "100-199",
    SUM(CASE WHEN 200 < deweyClass and deweyClass < 300 THEN 1 ELSE
    0 END) as "200-299",
    SUM(CASE WHEN 300 < deweyClass and deweyClass < 400 THEN 1 ELSE
    0 END) as "300-399",
    SUM(CASE WHEN 400 < deweyClass and deweyClass < 500 THEN 1 ELSE
    0 END) as "400-499",
    SUM(CASE WHEN 500 < deweyClass and deweyClass < 600 THEN 1 ELSE
    0 END) as "500-599",
    SUM(CASE WHEN 600 < deweyClass and deweyClass < 700 THEN 1 ELSE
    0 END) as "600-699",
    SUM(CASE WHEN 700 < deweyClass and deweyClass < 800 THEN 1 ELSE
    0 END) as "700-799",
    SUM(CASE WHEN 800 < deweyClass and deweyClass < 900 THEN 1 ELSE
    0 END) as "800-899",
    SUM(CASE WHEN 900 < deweyClass and deweyClass < 1000 THEN 1
    ELSE 0 END) as "900-999",
    SUM(CASE WHEN 0 < deweyClass and deweyClass < 1000 THEN 1 ELSE
    0 END) as total

FROM
    inraw

WHERE
    deweyClass < 1000 and cout >= '2011-01-01' and cout <= '2011-01-
    31'

GROUP BY
    hour with rollup;
```

- title: Which dewey classes appear most during different times of the hour?
- deweyClass: go through all dewey classes for each hour

Processing Time:

The process through the Sequel Pro interface on a 50/Mbps connection took 4.9 ms to complete.

Review & Analysis:

By doing a query on each hour of the day, it is possible to associate and to study how often certain dewey classes appear in certain hours of the day.

The results are based on some factors which includes:

- Living pattern
 - Working hours
 - Personal lifestyle
 - Age
- Geographic location
- Weather
- Social phenomena

MySQL 5.1.41-3ubuntu12.10

Hafiz/spl0/inraw

spl0

Select Database

Structure

Content

Relations

Table Info

Query

Table History

Users

Console

TABLES

inlog

inraw

outlog

outraw

x_title

x_trans

1

select hour(cout) as hour,

2

SUM(CASE WHEN 0 < deweyClass and deweyClass < 100 THEN 1 ELSE 0 END) as "000-099",

3

SUM(CASE WHEN 100 < deweyClass and deweyClass < 200 THEN 1 ELSE 0 END) as "100-199",

4

SUM(CASE WHEN 200 < deweyClass and deweyClass < 300 THEN 1 ELSE 0 END) as "200-299",

5

SUM(CASE WHEN 300 < deweyClass and deweyClass < 400 THEN 1 ELSE 0 END) as "300-399",

6

SUM(CASE WHEN 400 < deweyClass and deweyClass < 500 THEN 1 ELSE 0 END) as "400-499",

7

SUM(CASE WHEN 500 < deweyClass and deweyClass < 600 THEN 1 ELSE 0 END) as "500-599",

8

SUM(CASE WHEN 600 < deweyClass and deweyClass < 700 THEN 1 ELSE 0 END) as "600-699",

9

SUM(CASE WHEN 700 < deweyClass and deweyClass < 800 THEN 1 ELSE 0 END) as "700-799",

10

SUM(CASE WHEN 800 < deweyClass and deweyClass < 900 THEN 1 ELSE 0 END) as "800-899",

11

SUM(CASE WHEN 900 < deweyClass and deweyClass < 1000 THEN 1 ELSE 0 END) as "900-999",

12

SUM(CASE WHEN 0 < deweyClass and deweyClass < 1000 THEN 1 ELSE 0 END) as total

13

14

from inraw where deweyClass < 1000 and cout >= '2011-01-01' and cout <= '2011-01-31' group by hour with rollup;

Query Favorites

Query History

Run Previous

Run All

hour	000-099	100-199	200-299	300-399	400-499	500-599	600-699	700-799	800-899	900-999	total
7	0	0	0	0	0	0	0	7	3	0	10
8	3	12	12	100	10	76	128	349	91	115	897
9	9	32	20	109	5	87	146	396	90	146	1040
10	183	367	357	1550	185	725	2201	5932	593	1118	13238
11	326	660	684	2777	355	1190	4471	12246	1069	2130	25961
12	463	919	749	3257	465	1417	5268	16043	1388	2634	32663
13	716	1326	1135	4792	658	1986	7633	23863	1943	3827	47952
14	635	1477	1222	5167	679	2091	7589	25384	2020	4153	50484
15	749	1553	1207	5339	806	2397	8161	28455	2263	4379	55394
16	748	1647	1260	5871	949	2999	9071	31237	2197	4770	60835
17	691	1352	1107	5250	674	2044	8182	28269	1960	3812	53422
18	287	601	391	2133	211	751	3185	11906	698	1520	21714
19	275	508	374	1772	243	739	2812	9649	660	1263	18338
20	0	0	4	12	1	11	22	51	5	12	118
21	0	0	0	0	0	0	1	2	0	1	4
23	0	1	0	0	0	0	1	5	1	2	10
NULL	5085	10455	8522	38129	5241	16513	58871	193794	14981	29882	382080

TABLE INFORMATION

created: 1/26/12

updated: 1/26/12

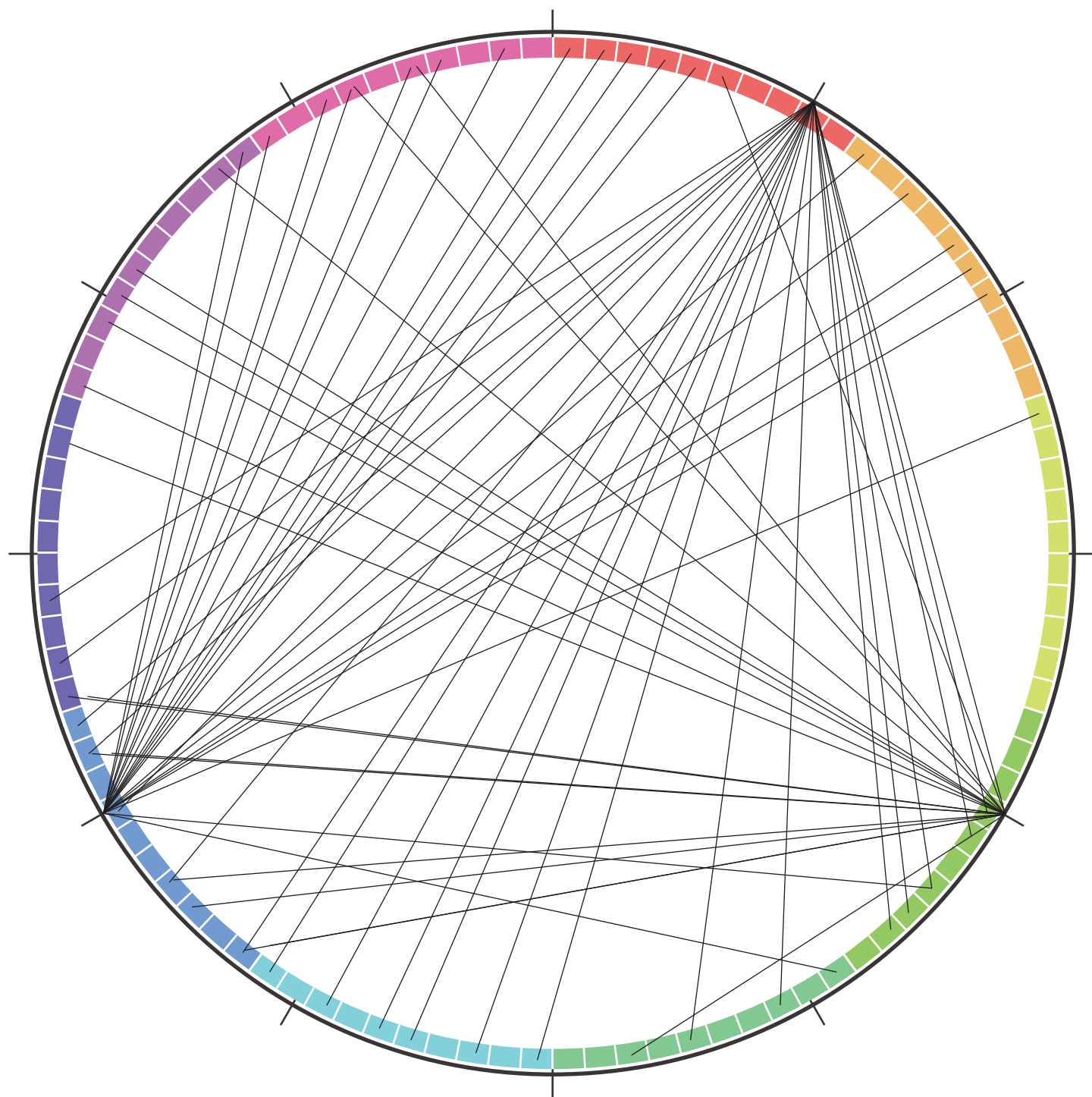
rows: 55,234,823

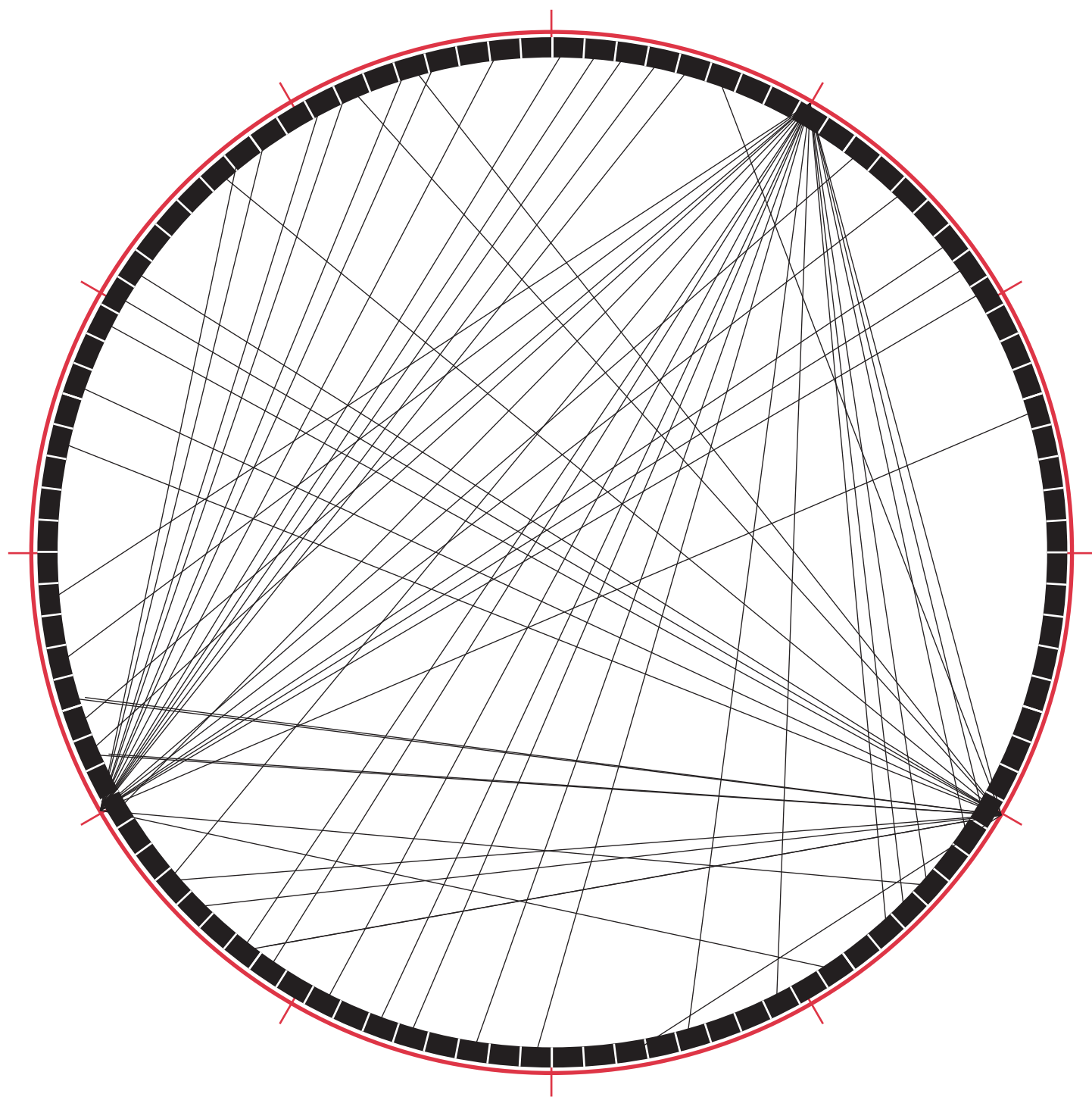
size: 11.9 GiB

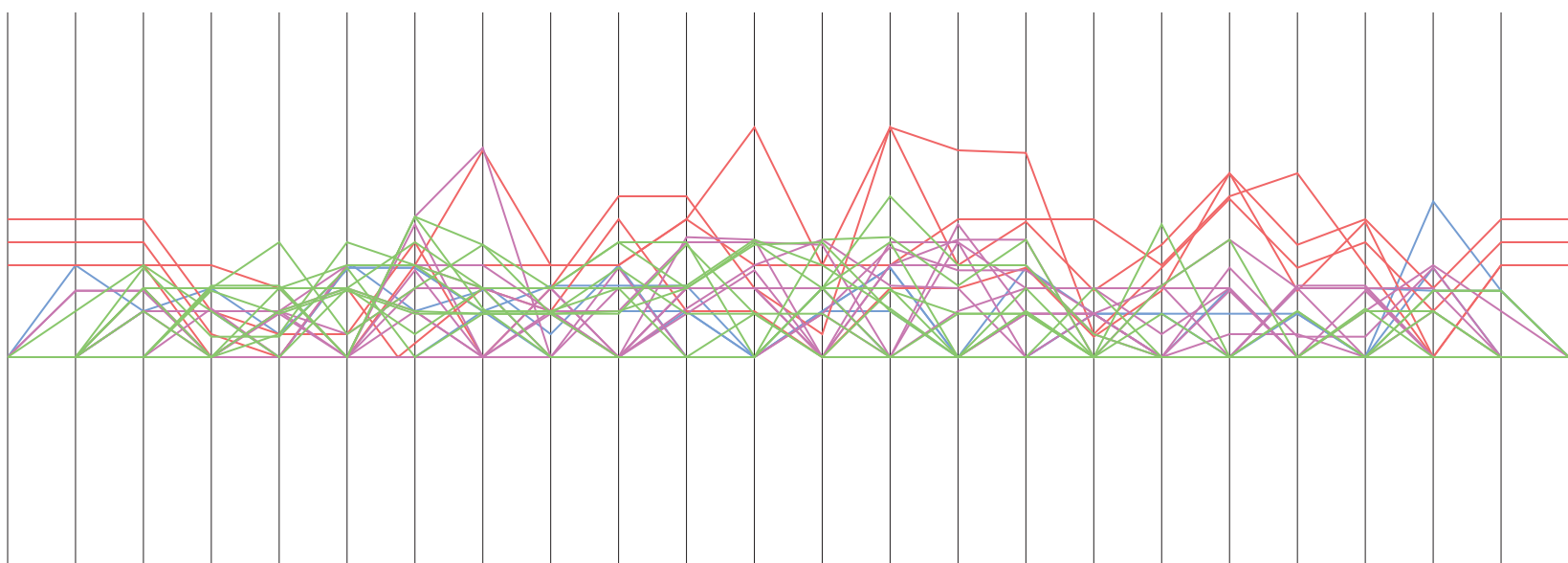
encoding: utf8

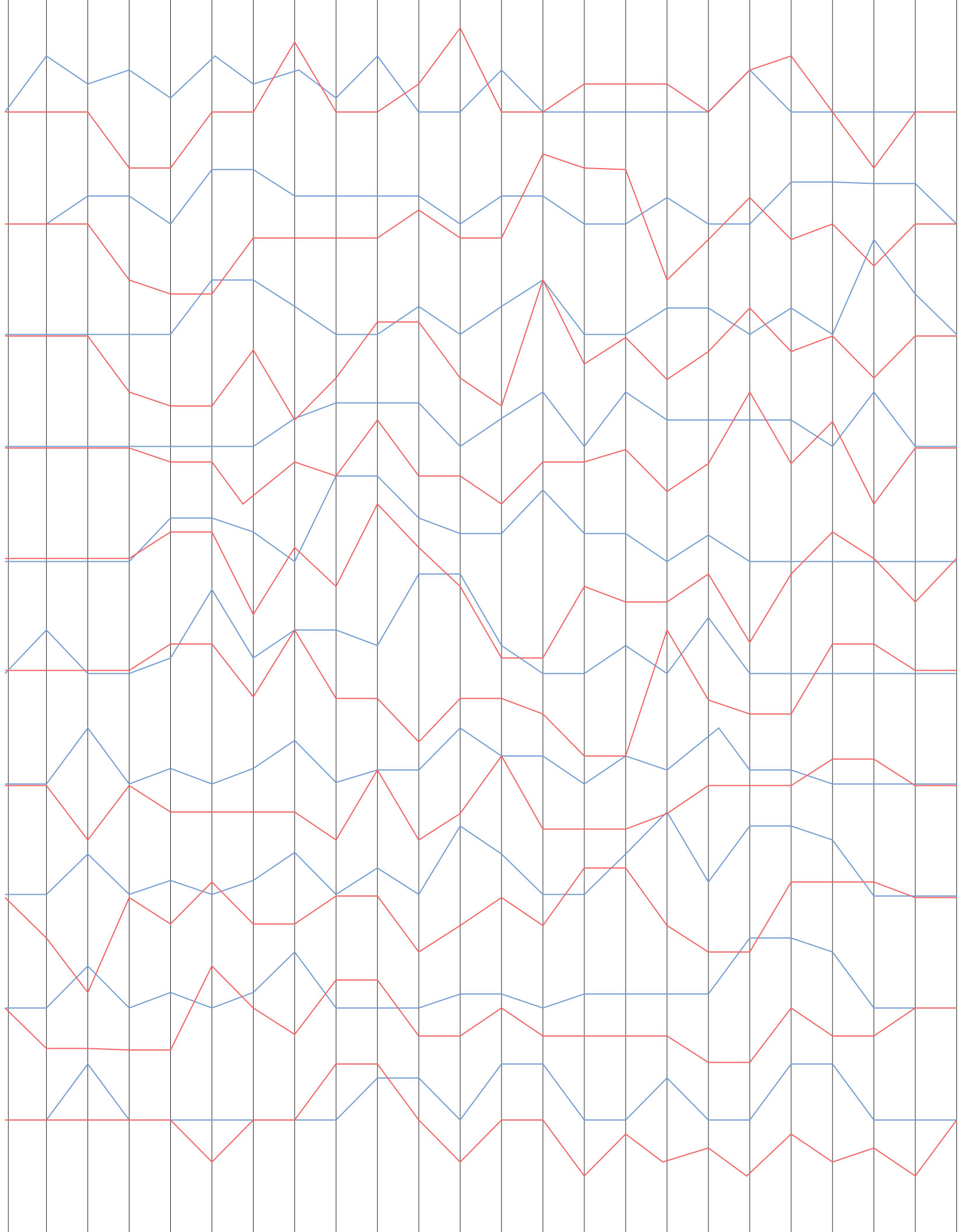
auto_increment: 55,...

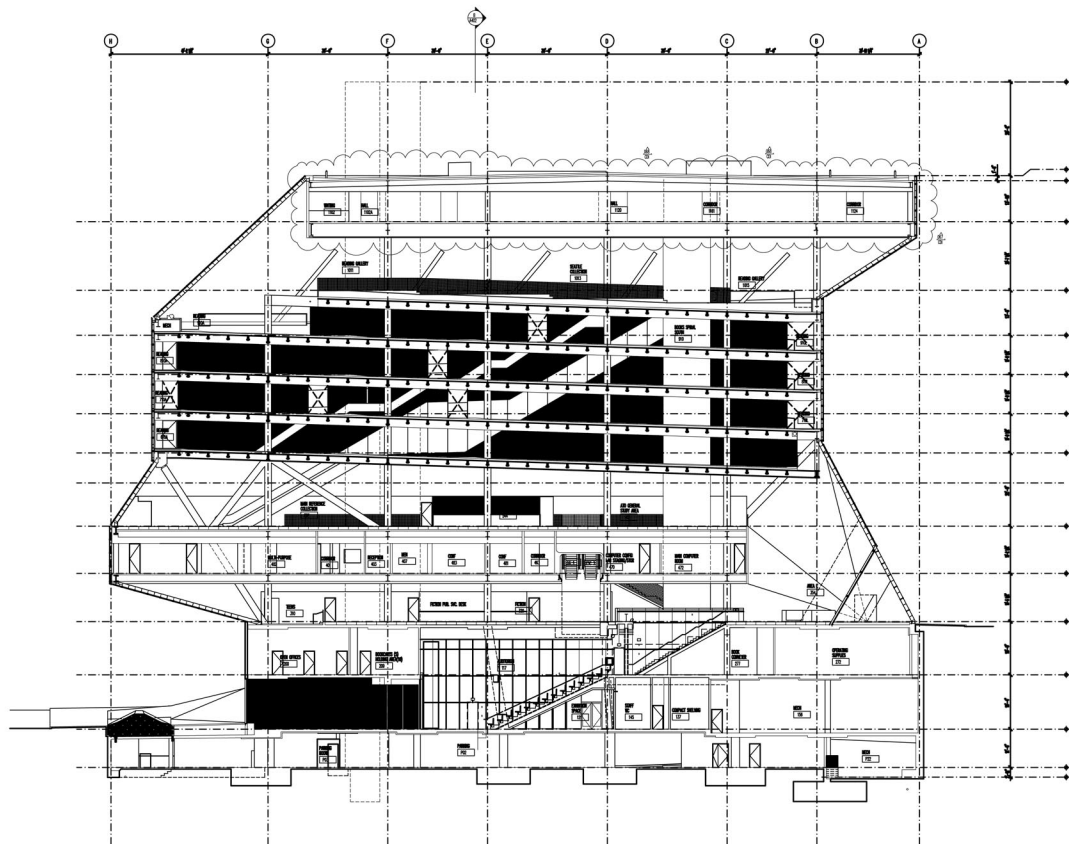
No errors; 17 rows affected, taking 4.9 ms











1 BUILDING SECTION AA
1/8" = 1'-0"

10/10/10

Seattle Central Library

10/10/10

10/10/10

10/10/10

10/10/10

10/10/10

10/10/10

10/10/10

10/10/10

10/10/10

10/10/10

10/10/10

10/10/10

10/10/10

10/10/10

10/10/10

10/10/10

10/10/10

10/10/10

10/10/10

10/10/10

10/10/10

10/10/10

10/10/10

10/10/10

10/10/10

10/10/10

10/10/10

10/10/10

10/10/10

10/10/10

10/10/10

10/10/10

10/10/10

10/10/10

10/10/10

10/10/10

10/10/10

10/10/10

10/10/10

10/10/10

10/10/10

10/10/10

10/10/10

10/10/10

10/10/10

10/10/10

10/10/10

10/10/10

10/10/10

10/10/10

10/10/10

10/10/10

10/10/10

10/10/10

10/10/10

10/10/10

10/10/10

10/10/10

10/10/10

10/10/10

10/10/10

10/10/10

10/10/10

10/10/10

10/10/10

10/10/10

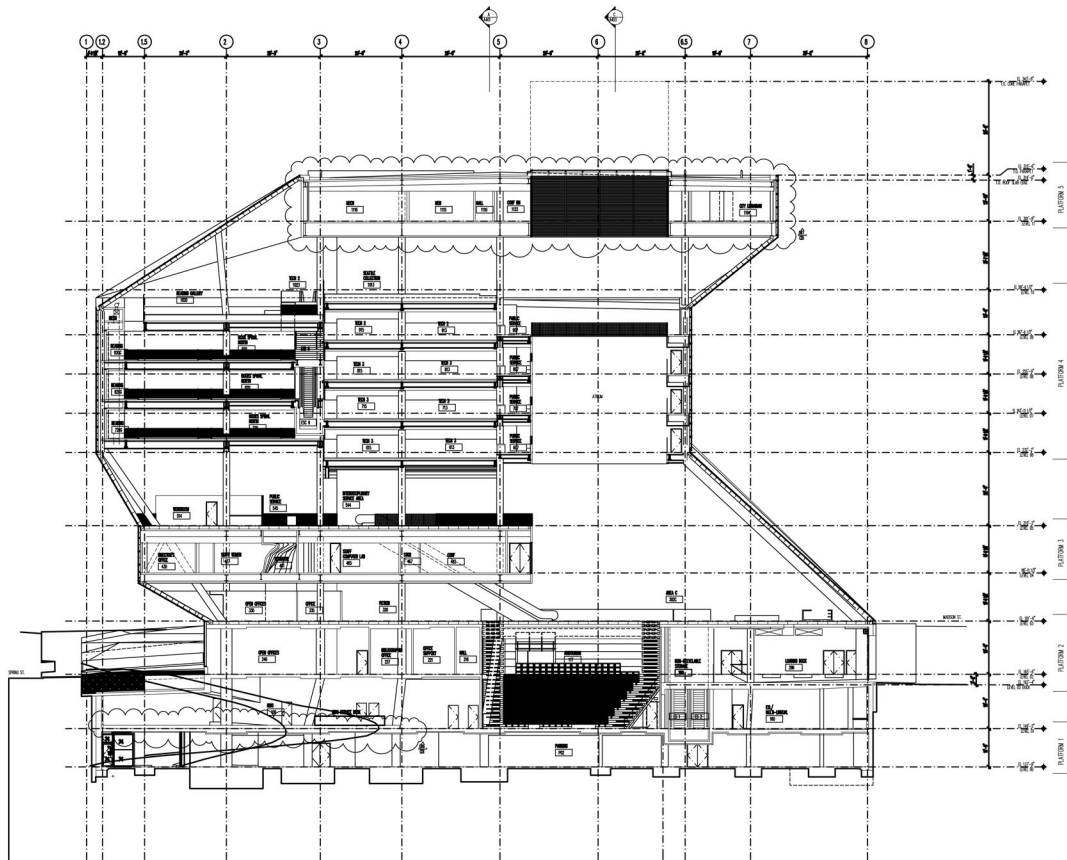
10/10/10

10/10/10

10/10/10

10/10/10

10/10/10



1 BUILDING SECTION BB
1/4" = 1'-0"

10/10/00

Seattle Central Library

10/10/00

10/10/00

10/10/00

10/10/00

10/10/00

10/10/00

10/10/00

10/10/00

10/10/00

10/10/00

10/10/00

10/10/00

10/10/00

10/10/00

10/10/00

10/10/00

10/10/00

10/10/00

10/10/00

10/10/00

10/10/00

10/10/00

10/10/00

10/10/00

10/10/00

10/10/00

10/10/00

10/10/00

10/10/00

10/10/00

10/10/00

10/10/00

10/10/00

10/10/00

10/10/00

10/10/00

10/10/00

10/10/00

10/10/00

10/10/00

10/10/00

10/10/00

10/10/00

10/10/00

10/10/00

10/10/00

10/10/00

10/10/00

10/10/00

10/10/00

10/10/00

10/10/00

10/10/00

10/10/00

10/10/00

10/10/00

10/10/00

10/10/00

10/10/00

10/10/00

10/10/00

10/10/00

10/10/00

10/10/00

10/10/00

10/10/00

10/10/00

10/10/00

10/10/00

10/10/00

10/10/00

10/10/00

10/10/00

10/10/00

10/10/00

10/10/00

10/10/00

10/10/00

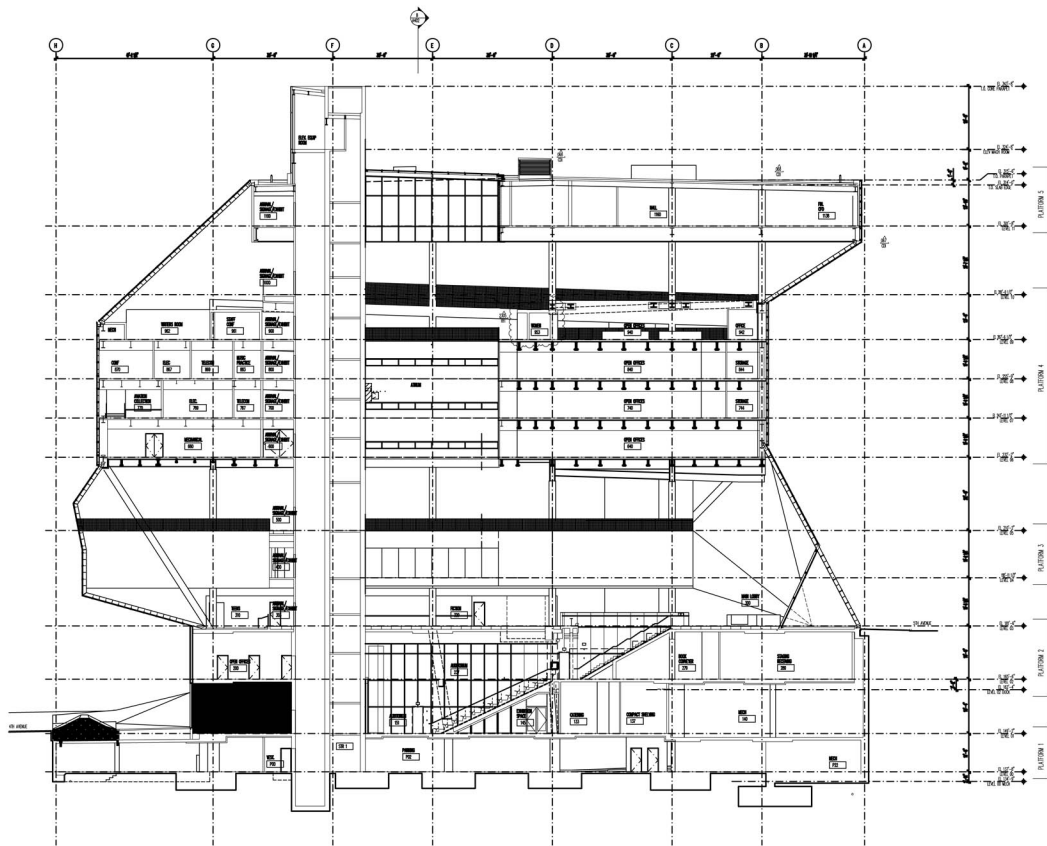
10/10/00

10/10/00

10/10/00

10/10/00

10/10/00



BUILDING SECTION CC
UP - 1/2"

1/8" = 1'-0"

Seattle Central Library

2007.05.01

2007.05.01

2007.05.01

2007.05.01

2007.05.01

2007.05.01

2007.05.01

2007.05.01

2007.05.01

2007.05.01

2007.05.01

2007.05.01

2007.05.01

2007.05.01

2007.05.01

2007.05.01

2007.05.01

2007.05.01

2007.05.01

2007.05.01

2007.05.01

2007.05.01

2007.05.01

2007.05.01

2007.05.01

2007.05.01

2007.05.01

2007.05.01

2007.05.01

2007.05.01

2007.05.01

2007.05.01

2007.05.01

2007.05.01

2007.05.01

2007.05.01

2007.05.01

2007.05.01

2007.05.01

2007.05.01

2007.05.01

2007.05.01

2007.05.01

2007.05.01

2007.05.01

2007.05.01

2007.05.01

2007.05.01

2007.05.01

2007.05.01

2007.05.01

2007.05.01

2007.05.01

2007.05.01

2007.05.01

2007.05.01

2007.05.01

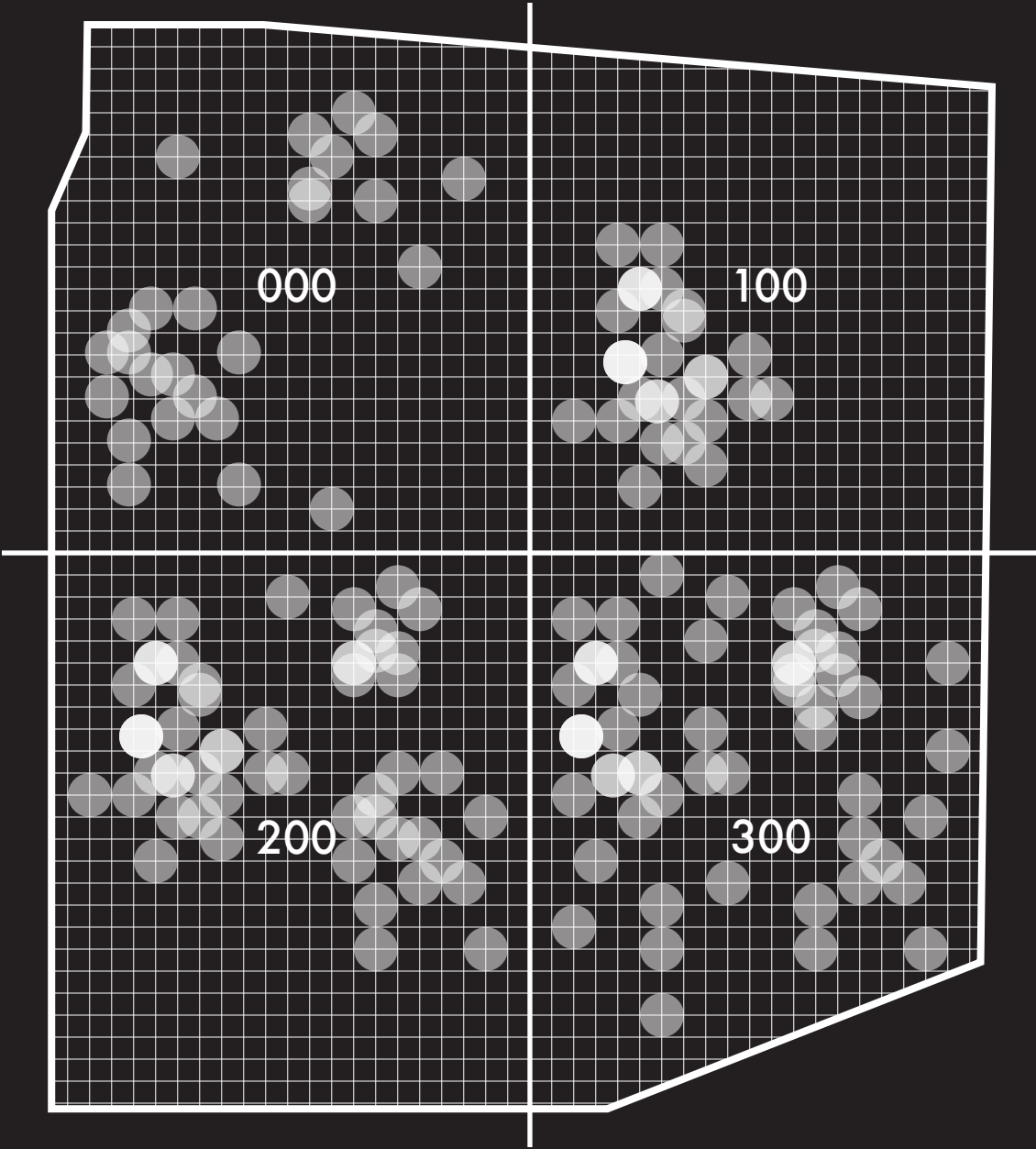
2007.05.01

2007.05.01

2007.05.01

A 403

Seattle Public Library - Dewey map



Seattle Public Library - Dewey map

